

Strata
Mason CF1117
Mineral CF1118

DAVID
IRWIN
x
bute



Cove
Item Code CF1117/0202



Joppa
Item Code CF1117/0504



Kemnay
Item Code CF1117/0605



Giffnock
Item Code CF1117/0303



Humbie
Item Code CF1117/0407



Rubislaw
Item Code CF1117/0706



Polmaise
Item Code CF1117/0101



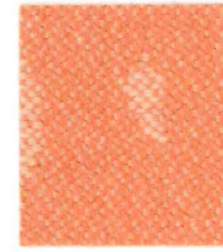
Dunmore
Item Code CF1117/0403



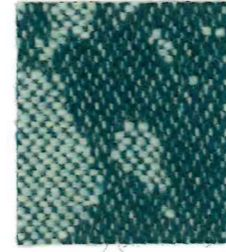
Quartz
Item Code CF1118/0101



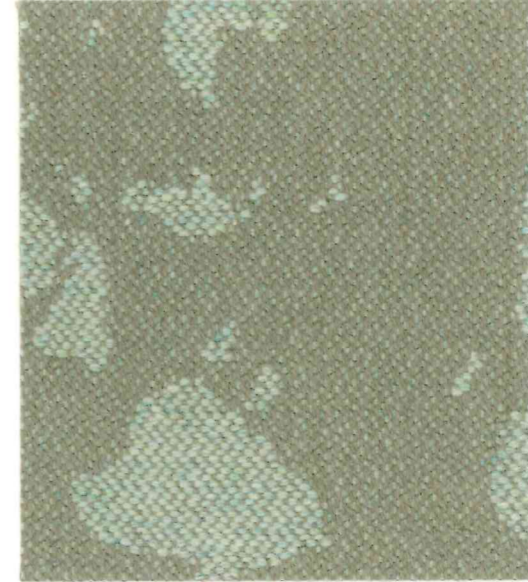
Corundum
Item Code CF1118/0303



Feldspar
Item Code CF1118/0202



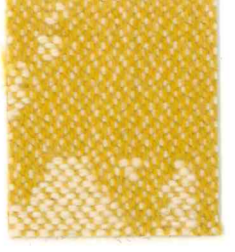
Kyanite
Item Code CF1118/0504



Serpentine
Item Code CF1118/0404



Variscite
Item Code CF1118/0604



Cadmium
Item Code CF1118/0805



Mica
Item Code CF1118/0705

Strata
Mason CF1117 and Mineral CF1118

Enquiries
sales@butefabrics.com
butefabrics.com

DAVID
IRWIN
x
bute

Strata
Mason CF1117
Mineral CF1118

Design

Strata Collection created by David Irwin with Bute Design Studio.

Application

Jacquard woven fabric suitable for upholstery and drapery in both heavy duty contract and domestic applications. Also suitable for drapery application.

Composition

76% Wool, 21% Polyamide,
3% other fibres

*Contains over 50% recycled fibres

Fabric Weight

490g/linear metre, 350g/m² approx.

Fabric Width

140cm approx. standard usable width.

Fabric Length

Lengths controlled and registered by calibrated measuring devices.

Abrasion Resistance

Martindale 100,000 cycles

Light Fastness

Colours comply with the requirements of BS EN ISO 105 – B02

Flame Retardancy Certifications

Passes Crib 5 Contract Upholstery

Passes Cigarette and Match

Passes Curtain and Drape

Passes IMO Upholstery

After Care

Regular maintenance greatly extends the useful life of a fabric. Ask for details of cleaning recommendations or consult a professional cleaning organisation.

Special Requirements

Our Design Studio collaborates in the development of special fabrics to fulfill aesthetic or fitness-for-purpose criteria.

Ongoing Development

It is our policy to promote continuous product development and we therefore reserve the right to change technical specifications, introduce or withdraw fabrics from the Bute Collection without prior notice.

Bute Fabrics Ltd is an accredited BS EN ISO 9001 company.
ISO 14001 Environmental Management System.

Wool is a natural fibre and is fully recyclable.

Made in Scotland

Enquiries

T +44 (0)1700 503 734

F +44 (0)1700 504 545

sales@butefabrics.com

butefabrics.com