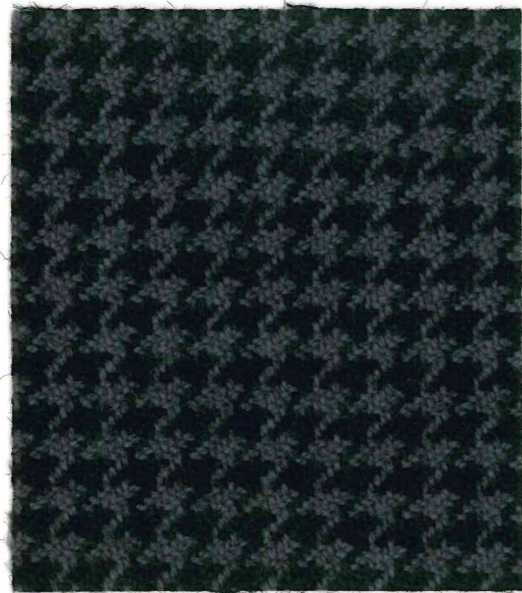


Turnberry CF751
and Troon CF752

bute



Barra
Item Code CF752/0303



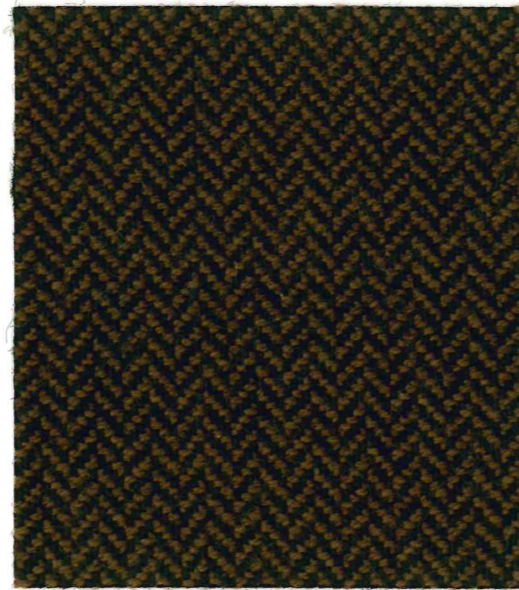
Puddle
Item Code CF751/0809



Harris
Item Code CF752/2323



Rain
Item Code CF751/1228



Peat
Item Code CF751/0104



Stag
Item Code CF751/1450



Palm
Item Code CF751/1734



Celery
Item Code CF752/1515



Houndstooth
Item Code CF752/0101



Fir
Item Code CF752/2727



Herring
Item Code CF751/0102



Marsh
Item Code CF751/1534



Barn Owl
Item Code CF752/0202



Fawn
Item Code CF751/0302



Wheat
Item Code CF752/3838

Turnberry CF751
and Troon CF752

Enquiries
sales@butefabrics.com
butefabrics.com

bute

Turnberry CF751 and Troon CF752

bute

Design

Turnberry CF751 and Troon CF752
by Bute Design Studio.

Application

Woven upholstery fabric
suitable for both heavy duty
and domestic applications.

Composition

92% pure new wool, 8% nylon.

Fabric Weight

500g/linear metre, 357g/m² approx.

Fabric Width

140cm approx. standard usable width.

Fabric Length

Lengths controlled and registered
by calibrated measuring devices.

Abrasion Resistance

Martindale, BS 2543:2004
BS EN 14465:2003 – Annex A
Turnberry CF751 115,000 cycles.
Troon CF752 95,000 cycles.

Flame Retardancy

Passes BS EN 1021 - 1 and 2:2006:
Ignition Sources 0 and 1, and BS5852:
2006: Section 4: Ignition Source 5.
Also satisfies the requirements of
BS7176: 2007: Medium Hazard
category, direct testing route, when
used in combination with a standard
CMHR 35kg/m³ polyurethane foam.
This does not preclude passes over
different types or densities of foam.

Passes Crib 5

Passes IMO resolution

A. 652 (16)

Passes Curtain and Drape

BS5867 Part 2 Level B*

Light Fastness

Colours comply with the requirements
of BS EN ISO 105 – B02:2013

After Care

Regular maintenance greatly extends
the useful life of a fabric. Ask for details
of cleaning recommendations or consult
a professional cleaning organisation.

Special Requirements

Customised shades can be produced
to meet individual requirements. Our
Design Studio also collaborates in the
development of special fabrics to fulfill
aesthetic or fitness-for-purpose criteria.

Ongoing Development

It is our policy to promote continuous
product development and we therefore
reserve the right to change technical
fabrics from the Bute Collection without
prior notice.

Bute Fabrics Ltd is an accredited BS EN ISO 9001 company.
ISO 14001 Environmental Management System.

Wool is a natural fibre and is fully recyclable.
Made in Scotland

Enquiries

T +44 (0)1700 503 734

F +44 (0)1700 504 545

sales@butefabrics.com

butefabrics.com

Bute Fabrics Ltd. 4 Barone Road, Rothesay, Isle of Bute, Scotland PA20 0DP
Registered in Scotland SC062040. VAT Reg No. GB 292 9471 19